



District of Nipissing
**EarlyON Child &
Family Centres**
2018 Annual Report



Table of Contents

Executive Summary 3

Acknowledgements..... 4

Introduction 5

 Program Statement 5

 Scope 5

 Data Collection..... 5

 Limitations..... 6

District of Nipissing EarlyON Child & Family Centres 6

EarlyON Child & Family Centres Attendance..... 7

 Unique Served vs. Total Visits 7

 Overall Attendance for 2018..... 7

 Attendance Trends 9

 Number of EarlyON Centres Attended 9

 Frequency of Visits per Adult 9

 Adult Attendance by Neighbourhood 10

Programs offered at EarlyON Centres 11

Referrals 12

Demographic Information..... 15

 Age of Participants 15

 Language Spoken at Home 16

 Indigenous Identity..... 17

 Marital Status 18

 Educational Status 18

 Employment Status 19

 Annual Household Income 19

Summary..... 20

Appendix A – EarlyON Registration Form 21

EXECUTIVE SUMMARY

2018 - A Year in Review



21 EarlyON Centres across the District of Nipissing

Who we served



1,906 unique children served
20,349 total visits by children



1,612 unique adults served
15,476 total visits by adults

What we offered



14 EarlyON Centres located within schools



11 EarlyON Centres offered French or Bilingual programs and services



3 EarlyON Centres offered evening programs; 2 offered weekend programs

ACKNOWLEDGEMENTS

This report was prepared by Jennifer Roussy, M.A., Children's Services Data Coordinator with the District of Nipissing Social Services Administration Board (DNSSAB). We would like to extend a special thank you to our EarlyON Child & Family Centre partners for their assistance in collecting the information contained in this report, and for providing quality early years programs and services to the families in the District of Nipissing.

- Community Living North Bay
- Community Resource Centre Killaloe
- Family Enrichment
- Timiskaming Child Care Corporation
- West Nipissing Child Care Corporation



INTRODUCTION

As of January 31, 2018, the District of Nipissing Social Services Administration Board (DNSSAB), as designated service system manager, became responsible for planning, implementing and managing the delivery of the early years system in the District of Nipissing.

Program Statement

EarlyON Child and Family Centres in the Nipissing District provide parents and caregivers with a warm, welcoming and inclusive environment for children in the early years. It is our goal to provide families with access to high quality services and support them in their role as their children's first teachers, enhance their well-being, and enrich their knowledge about early learning and development. EarlyON Centres are dedicated to supporting the relationships between families and their children by giving them a place where they can come together and engage in positive, meaningful experiences.

We know that children are competent, capable, curious, and rich in potential, and that parents and caregivers are pivotal in helping their children reach their fullest potential. We believe in a family-centred, strength-based and holistic approach to children's health and development, and we work collaboratively to ensure families are informed about, and connected to, other community services they may require.

Scope

This report provides data and information pertaining to the adults and children who attended EarlyON Child & Family Centres in the District of Nipissing between January 1 and December 31, 2018. This report will serve as a baseline for the district and presents an overview of those attending the EarlyON centres. This report will also be used to support and improve planning and service delivery for all community partners providing services to children in the District of Nipissing.

Data Collection

The data contained in this report is sourced from the Client Information Management System (CIMS), which is a web-based information and data system used by EarlyON Child & Family Centres in the District of Nipissing to collect attendance and registration information.

The data analysis was conducted using reports from CIMS and Tableau Business Intelligence & Analytics Software. Please note percentages may not add to 100 due to rounding error and/or data suppression. Please see Appendix A for the EarlyON Child & Family Centre Registration Form, which is used to gather demographic information.

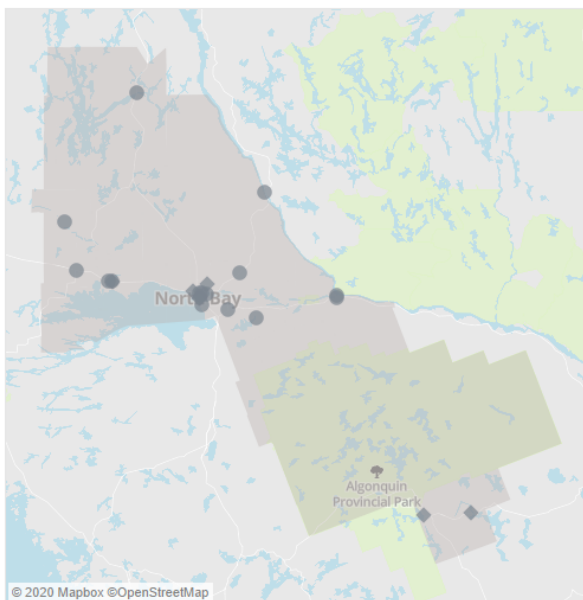
Limitations

Although all adults attending EarlyON Child & Family Centres in the District of Nipissing are asked to complete a registration form, not all demographic information is mandatory to complete the registration process. As such, some data elements may be ‘missing’ from the record. Furthermore, if an adult does not consent to have their information in CIMS, the adult and child would be counted manually, but may not be counted towards the unique numbers of adults and children served.

Due to the nature of CIMS requiring EarlyON staff to enter the registration information manually into the system, there is a possibility of data entry errors. All efforts have been made to reduce the number of errors by delivering an in-depth training course to all providers, ensuring consistency with definitions and guidelines when inputting data into CIMS. The Data Coordinator also checks the data regularly for errors, omissions and double entries.

DISTRICT OF NIPISSING EARLYON CHILD & FAMILY CENTRES

EarlyON Child & Family Centres



EarlyON Sites - # of Days of Operation

Agency	Program Name	# Days of Operation
Community Living North Bay	EarlyON Chippewa*	6
	EarlyON Ferris Glen*	2
	EarlyON Lorrain*	2
	EarlyON Mariale*	1
	EarlyON MFRC	2
	EarlyON OKP	3
	EarlyON Phelps	1
	EarlyON Sainte-Anne*	1
	EarlyON Saints-Anges*	2
	EarlyON Silver Birches	2
Community Resource Centre Killaloe	EarlyON St. Victor	1
	EarlyON Madawaska	1
Family Enrichment	EarlyON Whitney	1
	EarlyON EW Norman	2
Timiskaming Child Care Corporation	EarlyON Family Enrichment	5
	EarlyON Temagami	1
West Nipissing Child Care Corporation	EarlyON Christ Roi*	2
	EarlyON Jeunesse Active*	2
	EarlyON Saint-Joseph*	1
	EarlyON Verner*	4
	EarlyON West Nipissing Main Site*	4

The image above represents the EarlyON Child & Family Centres that were operating as of December 31, 2018. There were a total of **21** EarlyON locations across the district, **14** of which were located in schools.

French and/or Bilingual programming was offered at **52%** of EarlyON Centres, as indicated with an asterisk in the table above.

Evening programs were offered monthly at EarlyON EW Norman (Play, Dine & Dash), and weekly at EarlyON Temagami (Family Gym Night) and EarlyON Chippewa (variety of programs). Additionally, weekend programs were offered bi-monthly at EarlyON West Nipissing Main Site (Breakfast Club) and weekly at EarlyON Chippewa (variety of programs).

Notes:

- EarlyON Résurrection was operational from January-November 2018 and was moved to EarlyON Saint-Joseph in mid-November 2018.
- EarlyON Verner (located in the Verner-Caldwell Building) closed in May 2018 and was replaced by EarlyON Ste-Marguerite d'Youville in June 2018.
- EarlyON Mattawa was closed in July 2018 and moved to EarlyON St. Victor in September 2018
- EarlyON Lorrain and EarlyON Mariale began offering services in November 2018.

EARLYON CHILD & FAMILY CENTRES ATTENDANCE

Unique Served vs. Total Visits

When adults (parents/caregivers) and children are registered in CIMS, they are provided with a unique identifier that allows us to track attendance information for adults and children, regardless of which site they attend within the District of Nipissing. The definitions below apply to both adults and children registered in the system.

Served: the unique number of adults or children that participated in an EarlyON program during the year indicated. Each adult or child is only counted once, regardless of the number of visits they've made throughout the year.

Visits: the total number of visits made by adults or children to an EarlyON program during the year indicated.

Overall Attendance for 2018

In 2018, there were a total of **1,612** unique registered adults served for a total of **15,476** visits made to EarlyON Child & Family Centres within the District of Nipissing. Furthermore, there were a total of **1,906** unique children served for a total of **20,349** visits made to EarlyON Centres within our district.

Table 1 below presents the unique number of registered adults and children served as well as total visits for each of the EarlyON Child & Family Centres that were operational in 2018. Please note that adding the unique number served for each site within an agency will not equal the sub-total for that agency. Adults and/or children may have attended multiple sites within an agency and will appear in the number served for each site attended, but they will only be counted once in the agency sub-total. The same is true of the grand total, as adults and/or children may have attended multiple sites across different agencies but will only be counted once in the grand total.

Table 1. EarlyON Attendance by Agency and Site

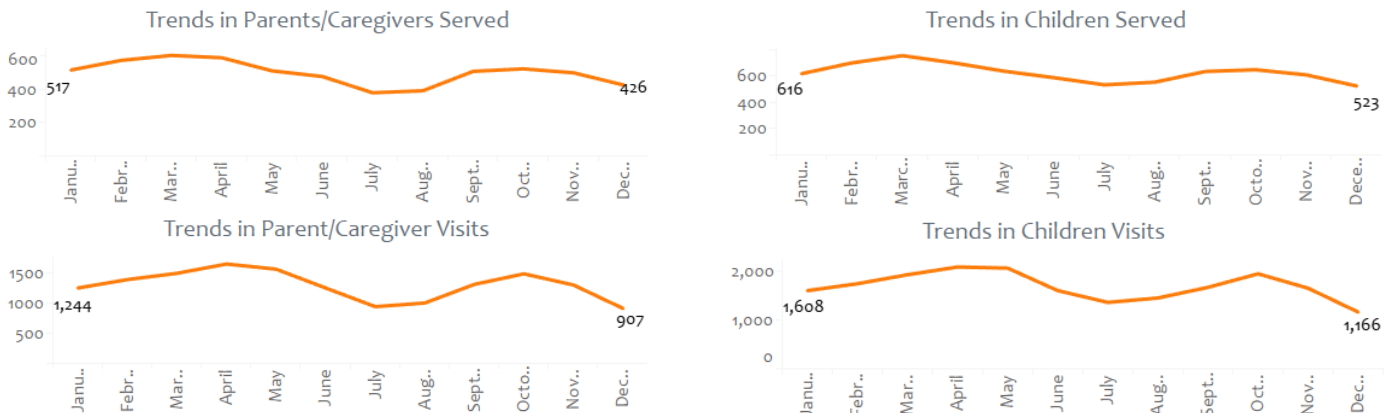
AgencyName	Days of Operation	Location	Adults		Children	
			Unique Served	Total Visits	Unique Served	Total Visits
Community Living North Bay	6	EarlyON Chippewa	1,079	8,083	1,264	10,190
	3	EarlyON OKP	307	1,647	418	2,364
	2	EarlyON Ferris Glen	61	528	76	669
	2	EarlyON Saints-Anges	66	440	78	766
	2	EarlyON Silver Birches	79	400	126	608
	2	EarlyON MFRC	28	199	54	371
	1	EarlyON Sainte-Anne	23	183	30	244
	1	EarlyON Phelps	16	162	24	205
	1*	EarlyON Mattawa	12	42	11	50
	2	EarlyON Lorrain	12	29	18	40
	1	EarlyON St. Victor	11	28	11	30
	1	EarlyON Mariale	1	1	2	2
Sub-Total			1,290	11,742	1,534	15,539
Community Resource Centre Killaloe	1	EarlyON Madawaska	31	190	36	207
	1	EarlyON Whitney	13	94	18	102
	Sub-Total			32	284	39
Family Enrichment	5	EarlyON Family Enrichment	115	1,217	87	984
	2	EarlyON EW Norman	56	601	71	1,141
	Sub-Total			163	1,818	151
Timiskaming Child Care Corporation	1	EarlyON Temagami	17	57	23	92
	Sub-Total			17	57	23
West Nipissing Child Care Corporation	4	EarlyON West Nipissing Main Site	121	689	167	998
	2	EarlyON Jeunesse Active	49	232	68	324
	2	EarlyON Christ Roi	22	219	29	324
	1*	EarlyON Résurrection	41	168	53	242
	4	EarlyON Ste-Margueritte d'Youville	26	139	33	199
	4*	EarlyON Verner	30	116	51	184
	1	EarlyON Saint-Joseph	8	12	8	13
Sub-Total			178	1,575	231	2,284
Grand Total			1,612	15,476	1,906	20,349

Note: * Indicates EarlyON centres that are no longer operating

- The most attended sites in 2018 included EarlyON Chippewa, EarlyON OKP, and EarlyON West Nipissing Main Site.
- The move of EarlyON Mattawa to EarlyON St. Victor did not appear to affect attendance, as a similar number of adults and children were served in both locations.
- Given that the move of EarlyON Résurrection to EarlyON Saint-Joseph occurred late in the year, it is not feasible to compare numbers served for these two sites at this time.

Attendance Trends

Examining the trends in attendance data monthly can help us monitor the usage of EarlyON Centres across the district. As can be seen in the graphs below, there was a decrease in attendance over the summer months, which is not surprising given that some of the smaller sites closed in July and August. This data will be used as a baseline to continue to monitor trends in the future.



Number of EarlyON Centres Attended

One variable that we examined was the number of different EarlyON Centres attended by adults and children. As can be seen in Table 2, there is a higher percentage of children (42.8%) than adults (28.8%) who attend more than one EarlyON Centre location. This is not surprising given that a child may be linked with multiple adults in the system. Although it would be expected that some participants would only attend one site, especially in our rural areas that only have one site, it is encouraging to see the use of multiple locations across adults and children.

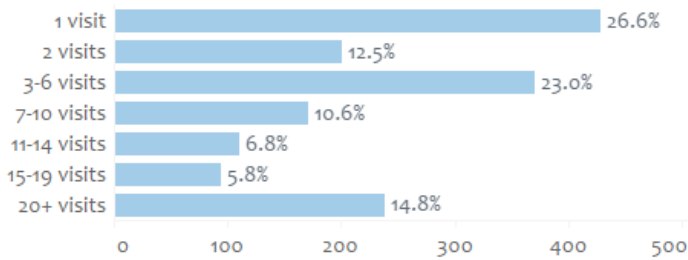
Table 2. Number of EarlyON Centres Attended

	% of Adults	% of Children
1 Location	71.2%	57.2%
2 Locations	21.4%	27.8%
3+ Locations	7.4%	15.0%

Frequency of Visits per Adult

Another variable that we would like to monitor moving forward is the frequency of visits per adult. As can be seen in the graph below, approximately 27% of adults only made one visit to an EarlyON Centre in 2018, 46% visited between 2-10 times, and roughly 27% attended 11 or more times.

Frequency of Visits per Adult

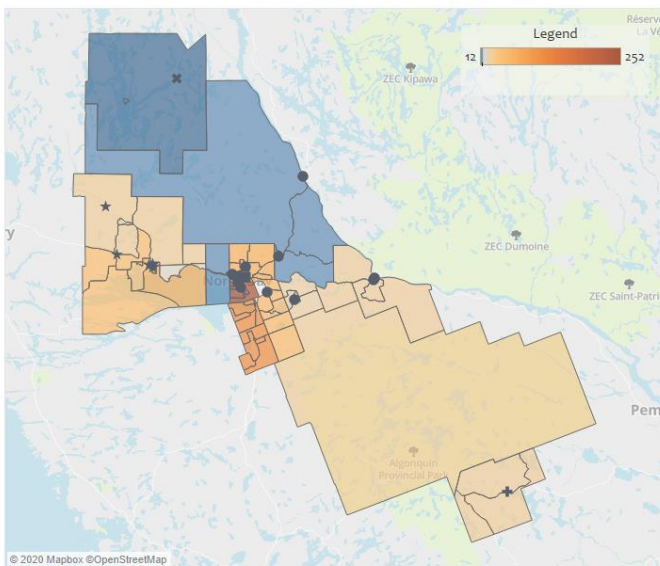


The low number of visits for some adults may be due to a return to work or children aging out of the program, amongst other possibilities. Questions will be included in future Quality Assurance Surveys to determine why adults may only be visiting once.

Adult Attendance by Neighbourhood

We have divided the District of Nipissing into various neighbourhoods by combining Statistics Canada Dissemination Areas (DA's). Using postal code information from the registration forms, we are able to determine the neighbourhoods in which adults attending EarlyON Centres are coming from. However, there are some limitations to this process. For instance, some registration forms are missing postal code information, some postal codes can span multiple DA's, and some adults may have moved but may not have updated their registration information. Therefore, the neighbourhood information provided represents an approximation of where adults are coming from to attend EarlyON Child & Family Centres.

Unique Parents/Caregivers Served by Neighbourhood



This heat map is based on the address information for the parent/caregiver.

Unique Parents/Caregivers Served by Neighbourhood

Neighbourhoods	Unique Served	Total Visits
Central/Downtown	252	2,352
West Ferris	245	2,405
Pinewood	155	1,438
Graniteville	136	1,213
Callander & Powassan	113	1,229
Birchaven	89	960
Airport Hill	79	829
Sturgeon Falls	71	605
Rural & CFB North Bay	68	1,078
East Ferris Area	53	482
Verner & Cache Bay Area	50	457
Thibeault Terrace	45	461
Field & River Valley Area	29	415
South Algonquin Area	29	279
East Nipissing	28	264
Bonfield	26	286
Nipissing First Nation	17	91
Nipissing North	13	181
Temagami & Area	12	50
Marstay-Warren & St-Charles	5	15
Grand Total	1,612	15,476

The neighbourhood with the most adults who visited an EarlyON Centre in 2018 was the Central/Downtown neighbourhood (252), followed by West Ferris (245), Pinewood (155) and Graniteville (136). Of interest, just over 7% of adults are visiting from neighbouring districts, including 113 adults from

Parry Sound District and 5 adults from the Sudbury District, while 97 adults visited from other parts of the province or country.

We will continue to monitor neighbourhood data to ensure that adults and children living in all neighbourhoods are able to access EarlyON Child & Family Centres.

PROGRAMS OFFERED AT EARLYON CENTRES

The EarlyON Child & Family Centres in the District of Nipissing offered over 40 different programs and services to adults and children in 2018. Table 3 provides a list of the various programs and services offered along with the total number of visits to each program by adults and children.

It is important to note that not all programs and services are offered at all EarlyON Centres in the district, or on a regular basis. All programs having the same name and/or similar content (e.g. Special Activity) have been combined, regardless of which agency is delivering the program.

Table 3. Visit Totals for Programs/Services Offered at EarlyON Child & Family Centres

Program Name	Adults	Children	Total
Baby and Me	109	111	220
Baby Play Date	565	563	1,128
Baby Sign Language	31	27	58
Baby Sing-a-long	275	263	538
Breastfeeding Support	5	5	10
Circle	1,761	2,338	4,099
Daddy Zone	62	92	154
Early Learning Program	14,147	17,313	31,460
Family Enrichment	1,490	1,191	2,681
Field Trips	71	120	191
Fit Fun Fridays	47	56	103
French is Fun	161	222	383
Get Active	37	46	83
Groupe de Jeu	867	1,146	2,013
Gym Night	24	21	45
Infant Massage	274	268	542
Laugh, Latch & Learn	41	42	83
Leap Into Learning	117	324	441
Let's Get Dirty	53	78	131

Program Name	Adults	Children	Total
Let's Learn French Together	10	15	25
Little Einstein	121	178	299
Musical Monkeys	60	74	134
Nurse Practitioner	73	56	129
Nutrition & Baby Food Making	22	16	38
On Track Health Fair	14	14	28
Play 'N Learn	46	63	109
Play, Dine & Dash	70	81	151
Play, Learn, Create	45	61	106
Pot-Pourri	27	26	53
Ready, Set, School	29	36	65
School Readiness	15	0	15
Special Activities	2,058	2,450	4,508
Strollers in Motion	48	53	101
The Breakfast Club	100	143	243
Toddler Time	86	103	189
Tucker Turtle	48	50	98
Tumble Tots	29	33	62
We All Learn Together	68	115	183
Welcome Home Baby	346	339	685
Workshops/Seminars/Guest Speakers	887	434	1,321
Yoga	6	9	15

REFERRALS

In order to monitor the needs of adults and children that are attending EarlyON Child & Family Centres in the District of Nipissing, EarlyON practitioners are asked to record the type and number of referrals that are made to various organizations and services in the community using CIMS. Referrals are either made when an adult asks for information, or when a practitioner offers information if they see an area of concern.

There were a total of **286** referrals made to a variety of organizations and services in 2018. The following table provides a breakdown of the number of referrals made to each organization and type of service.

Table 4. Referrals

Agency Referred To	Type of Service	# Referrals
Audiology Clinic	Hearing Concerns	2
Autism Ontario	Autism Services	3
	Information (General)	2
	Support Group	1
Canada's Food Guide Website	Nutrition Information	5
Children's Aid Society (CAS)	MotherCare	5
	Other (Please Specify)	4
	Infant Development	1
Community Living North Bay	Inclusion Support Program	16
	EarlyON Child & Family Centres	11
	Breastfeeding Support	2
	Other (Please Specify)	1
Community Resource Centre Killaloe	Prenatal Support	1
Counselling Programs	Mental Health	11
Dentist	Dental Services	2
DNSSAB	Child Care Fee Subsidy	12
	Licensed Child Care Waitlist Registry	6
	Social Assistance (Ontario Works)	4
	Other (Please Specify)	3
Eat Right Ontario Website	Nutrition Information/Support	8
Family Doctor	Medical Services	8
	Mental Health	5
	Other (Please Specify)	4
	Developmental Screening	3
Family Enrichment	EarlyON Child & Family Centres	1
Food Bank	Infant Food Cupboard	1
	Food Services	1
HANDS	Behaviour Support	5
	Autism Services	5
	Walk-in Counselling Services	3
	Developmental Screening	2
	TIPS	1
	Developmental Services	1
Health Unit	Healthy Babies Healthy Children	1
KidSport	Financial Assistance (Sports)	5
LIPI	Financial Assistance	3

Agency Referred To	Type of Service	# Referrals
	Financial Assistance (Housing)	1
Ministry of Transportation	Car Seat Information	9
Multicultural Centre	Other (Please Specify)	2
	Meet New/Local Families	2
NDDS Website	Developmental Screening	4
Nipissing Association for Disabled Youth (NADY)	Recreation Programs	1
Nipissing Legal Clinic	Legal Services	7
Nipissing Transition House	Emergency Shelter	1
NNDSB/School	Information (Special Needs)	2
North Bay Parry Sound District Health Unit	Nutrition Information/Support	8
	Dental Clinic	8
	Breastfeeding Support	7
	Healthy Babies Healthy Children	7
	Prenatal Support	1
	Parenting Classes	1
North Bay Recovery House	Addiction Services	2
NPSCDSB	Family Enrichment	1
Nurse Practitioner	Nutrition Information/Support	2
	Medical Services	1
OBGYN	Medical Services	1
One Kids Place Children's Treatment Centre	Occupational Therapy	14
	Feeding Clinic	7
	Speech And Language	6
	Autism Services	3
	Physiotherapy	2
	Recreation Therapist	1
	Other (Please Specify)	1
	details not provided	1
Other (Please Specify)	Other (Please Specify)	1
Pediatrician	Other (Please Specify)	5
	Medical Services	5
	Developmental Screening	4
	Mental Health	1
Timiskaming Child Care Corporation	EarlyON Child & Family Centres	10
Walk-in Clinic	Medical Services	3
West Nipissing Child Care Corporation	EarlyON Child & Family Centres	3
YES Employment	Employment Services	2
Grand Total		286

The highest proportion of referrals was made to One Kids Place Children’s Treatment Centre (12.2%), followed by the North Bay Parry Sound District Health Unit (10.8%) and Community Living North Bay (10.5%). The majority of referrals made were for **health or medical related concerns**, including developmental and mental health services.

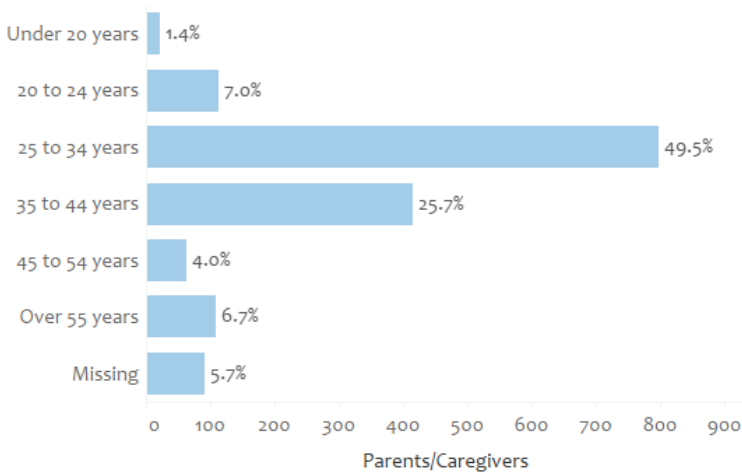
DEMOGRAPHIC INFORMATION

Demographic information is available for most adults and children who have registered at an EarlyON Child & Family Centre in the District of Nipissing. As mentioned previously, it is possible that the information collected on the original registration form has changed but may not be updated in CIMS.

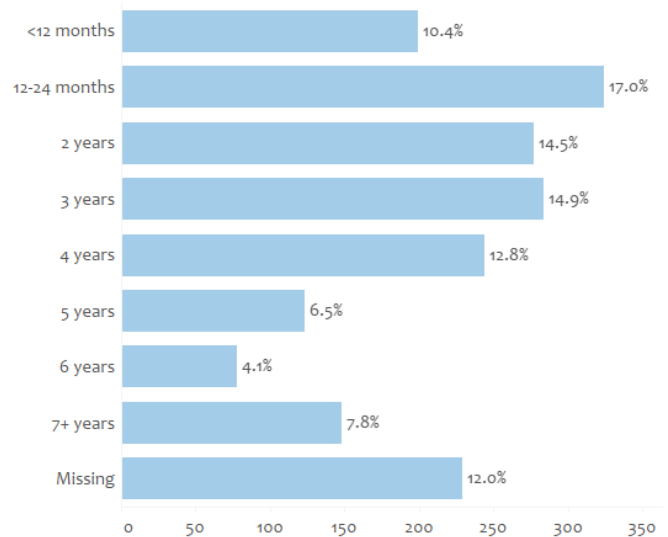
Age of Participants

Ages are calculated as of December 31, 2018. The ‘missing’ category represents adults and children who do not have their birth date entered into the system. As can be seen in the graph below, 75% of adults attending EarlyON Child & Family Centres were between the ages of 25-44 years old, while 5.7% did not provide their birth date.

Adults Served by Age Group



Children Served by Age Group



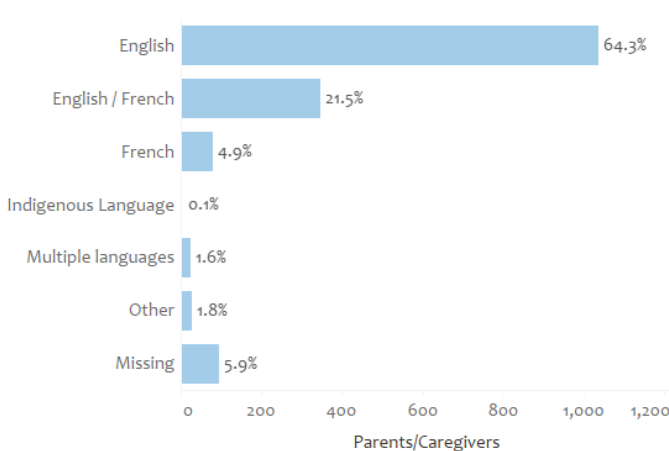
The majority of children attending EarlyON Centres were 4 years of age or younger (69.6%), which is not surprising given that most children begin attending school between the ages of 4 and 5 years. Of note, 12% of children (229 children) are missing their birth date information in the system and therefore their age

cannot be calculated. The levels of missing information will be monitored closely, with the goal of decreasing the number of participants with missing information in 2019.

Language Spoken at Home

In order to ensure we meet the language and cultural needs of families attending EarlyON centres across the District of Nipissing, it is important to examine the language spoken most often at home to gain an understanding of the needs for each neighbourhood or community.

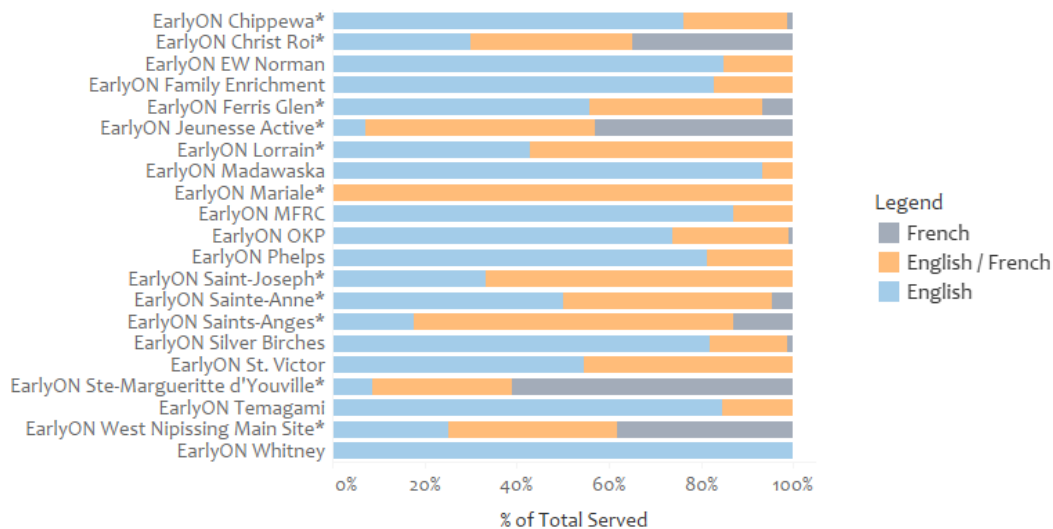
Language Spoken at Home



The majority of adults attending EarlyON Centres reported speaking **English** only in the home (**64.3%**), while just under **5%** reported speaking **French** only in the home.

Moreover, **21.5%** reported speaking both French and English, while **1.6%** reported speaking multiple languages in the home (i.e. 3 or more).

The following graphs illustrate the language(s) spoken in the home of adults by the EarlyON Centres they attend. Those centres that offer French or Bilingual services are marked with an asterisk.

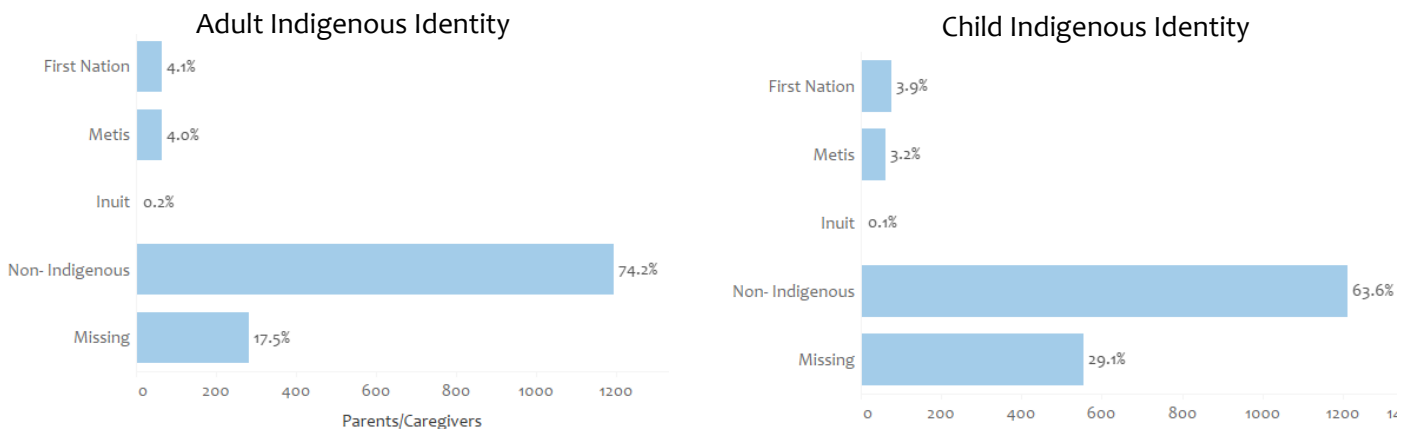


- EarlyON Whitney (**100%**) and EarlyON Madawaska (**93%**), both of which are in the South Algonquin & Area neighbourhood, have the highest percentage of English speaking adults.

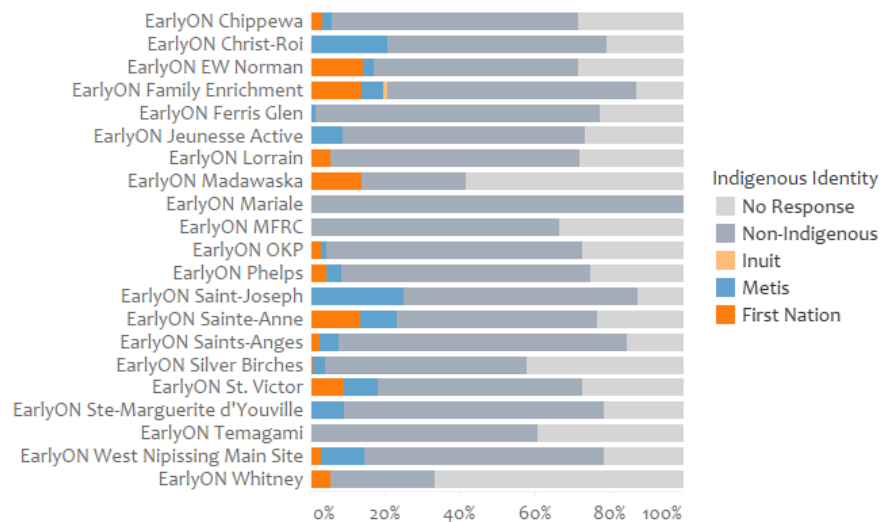
- The EarlyON Centres with the highest percentage of families who speak only French in the home included all West Nipissing sites: EarlyON Ste-Marguerite d'Youville in Verner (**61%**), EarlyON Jeunesse Active (**43%**) and EarlyON West Nipissing Main Site (**38%**) in Sturgeon Falls, and EarlyON Christ-Roi in River Valley (**35%**)
- **55%** of EarlyON Child & Family Centres attended by adults who spoke at least some French in the home (French or French/English) offered French or Bilingual services

Indigenous Identity

The figures below illustrate Indigenous self-identification by adults and children attending EarlyON Child & Family Centres in the District of Nipissing. Approximately **8%** of adults and **7%** of children self-identified as having Indigenous ancestry.



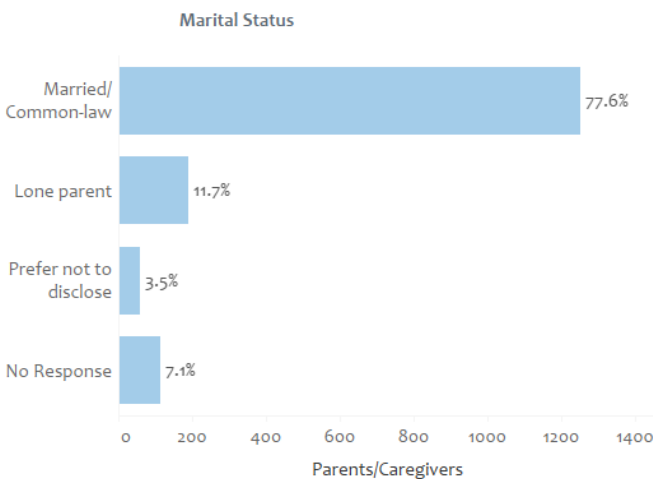
The following graph illustrates the Indigenous identity of children by the EarlyON Centre attended.



- The EarlyON Centres in which more than 20% of children self-identified as Indigenous include EarlyON Saint-Joseph (25%), EarlyON Christ-Roi (20.7%), and EarlyON Family Enrichment (20.6%).
- EarlyON Mariale, EarlyON MFRC and EarlyON Temagami did not have any children self-identify as Indigenous; however, approximately 1 in 3 adults did not respond to this question for EarlyON MFRC and EarlyON Temagami

Marital Status

In 2018, registration forms were updated to combine and simplify the different marital statuses that were used in the past. The following graph represents the marital status of those attending EarlyON Child & Family Centres in 2018.

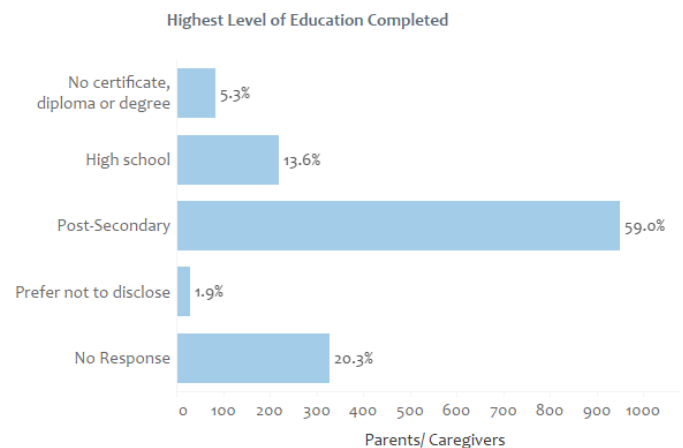


The majority of adults attending EarlyON Child & Family Centres fall into the married or common-law category (77.6%), while approximately 12% identified as lone parents. Although there was a ‘prefer not to disclose’ option, 7% of adults did not provide a response to this question.

Educational Status

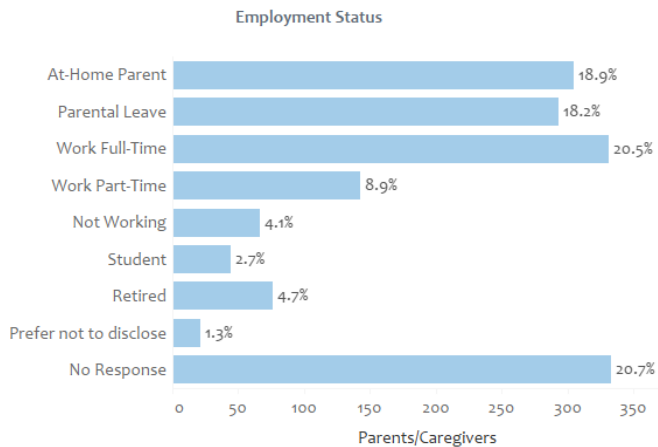
Similarly, the options for highest level of education completed that were previously used were combined to simplify the category options for education level in 2018.

As can be seen in the figure, 59% of adults indicated they had some level of post-secondary degree or diploma, while approximately 14% indicated they had a high school diploma. Although there was an option to select ‘prefer not to disclose’, 1 in 5 adults chose not to answer this question.



Employment Status

As can be seen in the figure below, **29%** of adults indicated that they were currently in the work force (working full-time or part-time), while approximately **37%** indicated that they were either on parental leave or an at-home parent.



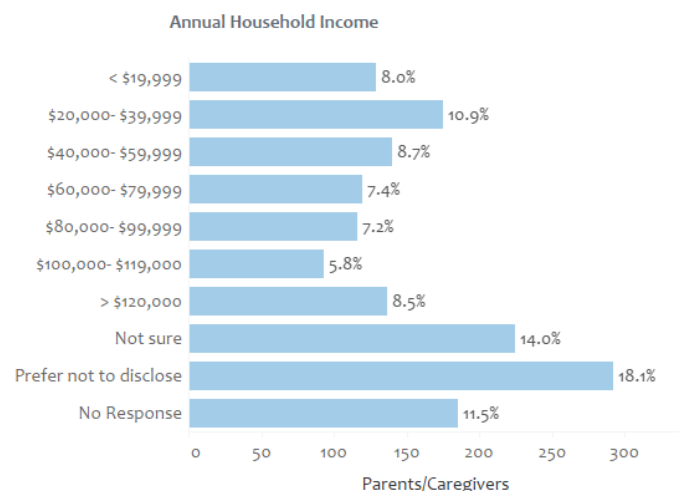
Caution should be used when interpreting the parental leave category, as the status may not have been updated when the parent returned to work. Similar to other demographic questions, **1 in 5** adults chose not to respond to this question.

Employment information can provide us with valuable information as to when adults may be able to access services. For instance, most adults who are working full-time are not likely able to attend programming during the day, and therefore evening and weekend programs would probably suit them best. Continuing to examine trends in employment status will allow us to ensure services are accessible to all families.

Annual Household Income

Examining the annual household income of participants allows us to determine if EarlyON Child & Family Centres programs and services are equally accessible, regardless of income level.

Approximately **44%** of adults either did not respond, did not disclose, or were not sure of their annual household income. Nonetheless, the graph pictured here indicates that **28%** of adults have an annual household income of **< \$60,000** while **29%** have an annual household income of **> \$60,000**.



SUMMARY


Given that the DNSSAB is responsible for planning and managing the delivery of EarlyON Child & Family Centres programs and services as of January 2018, the data and information presented in this report will serve as a baseline from which to compare future attendance and program information.




APPENDIX A – EARLYON REGISTRATION FORM

Nipissing District EarlyON Child and Family Centre Registration Form			
Adult Information			
First Name:		Last Name:	
Date of Birth (mm/dd/yy):		Gender: <input type="checkbox"/> Female <input type="checkbox"/> Male <input type="checkbox"/> Other <input type="checkbox"/> Prefer not to say	
Do you identify as indigenous? <input type="checkbox"/> Yes <input type="checkbox"/> No <input type="checkbox"/> Prefer not to say			
If yes, please select: <input type="checkbox"/> First Nation <input type="checkbox"/> Metis <input type="checkbox"/> Inuit <input type="checkbox"/> Other _____ <input type="checkbox"/> Prefer not to say			
What languages are spoken in the home: (select all that apply) <input type="checkbox"/> English <input type="checkbox"/> French <input type="checkbox"/> Indigenous language <input type="checkbox"/> Other _____			
Contact Information			
Address: (including apartment number)		City	Province
			Postal Code
Telephone number:		Email address:	
Child Information			
1.	First Name:		Last Name:
	Date of birth: (mm/dd/yy)	Your relationship to the child: <input type="checkbox"/> Parent/ Guardian <input type="checkbox"/> Caregiver <input type="checkbox"/> Child Care provider	
	Does your child identify as indigenous? <input type="checkbox"/> Yes <input type="checkbox"/> No <input type="checkbox"/> Prefer not to say		
	If yes, please select: <input type="checkbox"/> First Nation <input type="checkbox"/> Metis <input type="checkbox"/> Inuit <input type="checkbox"/> Other _____ <input type="checkbox"/> Prefer not to say		
	Allergies or special needs:		
2.	First Name:		Last Name:
	Date of birth: (mm/dd/yy)	Your relationship to the child: <input type="checkbox"/> Parent/ Guardian <input type="checkbox"/> Caregiver <input type="checkbox"/> Child Care provider	
	Does your child identify as indigenous? <input type="checkbox"/> Yes <input type="checkbox"/> No <input type="checkbox"/> Prefer not to say		
	If yes, please select: <input type="checkbox"/> First Nation <input type="checkbox"/> Metis <input type="checkbox"/> Inuit <input type="checkbox"/> Other _____ <input type="checkbox"/> Prefer not to say		
	Allergies or special needs:		
3.	First Name:		Last Name:
	Date of birth: (mm/dd/yy)	Your relationship to the child: <input type="checkbox"/> Parent/ Guardian <input type="checkbox"/> Caregiver <input type="checkbox"/> Child Care provider	
	Does your child identify as indigenous? <input type="checkbox"/> Yes <input type="checkbox"/> No <input type="checkbox"/> Prefer not to say		
	If yes, please select: <input type="checkbox"/> First Nation <input type="checkbox"/> Metis <input type="checkbox"/> Inuit <input type="checkbox"/> Other _____ <input type="checkbox"/> Prefer not to say		
	Allergies or special needs:		
<i>For additional children, please attach a separate registration form</i>			
June 2018		For office use only New _____ Update _____	

Demographic Information		
<i>Information provided will assist in planning and administering programs and services. Information provided will not affect programs or services you or your family access.</i>		
Employment Status: <input type="checkbox"/> Work full time <input type="checkbox"/> Work part time <input type="checkbox"/> Parental leave <input type="checkbox"/> At-home parent <input type="checkbox"/> Student <input type="checkbox"/> Retired <input type="checkbox"/> Unemployed <input type="checkbox"/> Prefer not to disclose		
Highest level of education completed: <input type="checkbox"/> Less than high school <input type="checkbox"/> Completed high school <input type="checkbox"/> Post-Secondary degree/diploma <input type="checkbox"/> Prefer not to disclose		
Marital Status: <input type="checkbox"/> Married/Common-law <input type="checkbox"/> Lone parent/single <input type="checkbox"/> Prefer not to disclose		
Total annual household income before tax: <input type="checkbox"/> Less than \$19,999 <input type="checkbox"/> \$20,000-\$39,999 <input type="checkbox"/> \$40,000-\$59,999 <input type="checkbox"/> \$60,000-\$79,999 <input type="checkbox"/> \$80,000-\$99,999 <input type="checkbox"/> \$100,000-\$119,999 <input type="checkbox"/> Greater than \$120,000 <input type="checkbox"/> Not sure <input type="checkbox"/> Prefer not to say		
Consent and Agreement		
<p>I understand that personal information about my family is being collected under the legal authority of the Municipal Act, 2001, the District Social Services Administration Boards Act, R.S.O. 1990, c. D.15 and the Child Care and Early Years Act, 2014 for the purpose of attending programs and services at a Nipissing District EarlyON Child and Family Centre (CFC). I acknowledge that in attending programs and services, my family information will be shared with each program and/or agency I attend. I also understand and consent that this personal information be viewed or used for the purposes of: (a) administering my registration; (b) administering the OneHSN Childcare system; (c) providing customer support services; (d) assisting the District of Nipissing Social Services Administration Board (DNSSAB) and/or agency delivering EarlyON CFC programs and services with research, planning, reporting, evaluation and accountability purposes. I understand that RBB Innovations Ltd., as a contractor to the DNSSAB, will provide some of the services set out above, and accordingly, will have access to the personal information. The collection, use and disclosure of personal information will be limited to the minimum amount necessary to carry out the purposes set out above and will be subject to applicable privacy legislation. I acknowledge that the DNSSAB, RBB Innovation Ltd. as an agent of the DNSSAB, and participating EarlyON CFC agencies are governed by and required to adhere to the freedom of information and protection of privacy legislation including the Municipal Freedom of Information and Protection of Privacy Act (MFIPPA), Personal Information Protection and Electronic Documents Act (PIPEDA) and the Personal Health Information Protection Act (PHIPA). I understand that I may change or withdraw my consent at any time by giving the District of Nipissing Social Services Administration Board notice in writing. However, I also understand that, if I change or withdraw my consent, it may limit the range of services available to my family. I agree to receive emails from DNSSAB and/or EarlyON CFC agencies via this registration. I further understand I can withdraw my consent on receiving emails from DNSSAB and EarlyON CFC agencies. I have read and understand the content of this consent. I declare that this consent has been given voluntarily.</p>		
<hr style="border: none; border-top: 1px solid black; margin-bottom: 5px;"/> Parent/Caregiver signature	<hr style="border: none; border-top: 1px solid black; margin-bottom: 5px;"/> Staff signature	<hr style="border: none; border-top: 1px solid black; margin-bottom: 5px;"/> Date



EarlyON
Child and Family Centre
ON y va
Centre pour l'enfant et la famille



Ontario

June 2018

For office use only New _____ Update _____