

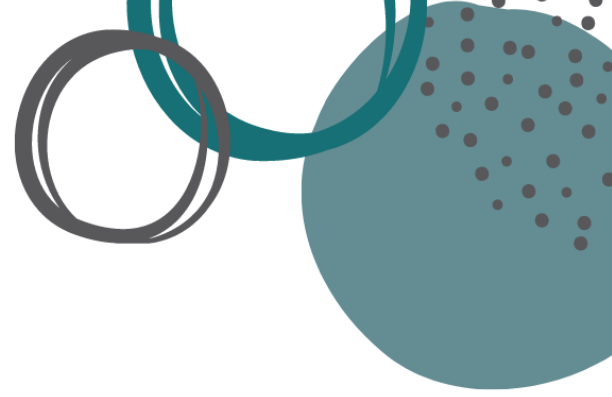
# 2020 Annual Report

District of Nipissing  
EarlyON Child & Family Centres

District of Nipissing  
Social Services  
Administration Board

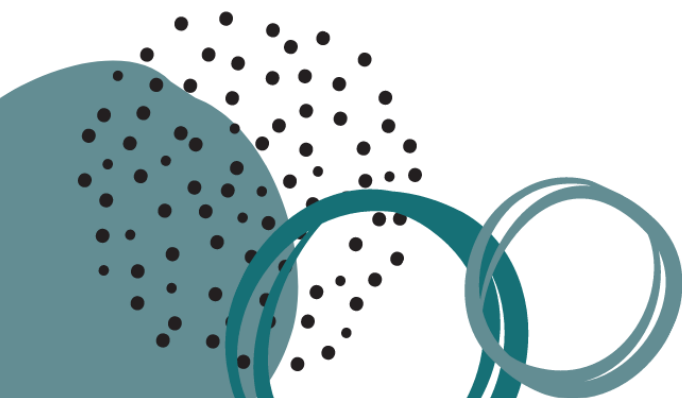


Conseil d'administration  
des services sociaux  
du district de Nipissing



# Table of Contents

Executive Summary .....	1
Acknowledgements.....	2
Introduction.....	3
Scope & Data Collection .....	4
Limitations .....	4
District of Nipissing EarlyON Child & Family Centres .....	5
EarlyON Child & Family Centres Attendance.....	6
Unique Served vs. Total Visits .....	6
Overall Attendance for 2020 .....	6
Adult Attendance by Neighbourhood .....	7
Programs Offered at EarlyON Centres .....	8
January 1 to March 13, 2020.....	9
April 1 – August 31, 2020 .....	10
September 1 – December 31, 2020 .....	12
EarlyON Outreach and Mobile Services.....	14
Summary.....	15



## EXECUTIVE SUMMARY



# EarlyON 2020

A Year in Review

### Open Social Media Posts



Avg. Views per Post - 244



### Registered Programs



#### Children



**1,119**  
unique

#### Adults



**870**  
unique

**10,678**  
total visits

**7,200**  
total visits

Data presented for January 1 to December 31, 2020  
Open Posts, Activity Kits and total visits include data from cross-jurisdictional programs

## ACKNOWLEDGEMENTS

The District of Nipissing Social Services Administration Board (DNSSAB) would like to extend a special thank you to our EarlyON Child & Family Centre partners for their perseverance and resilience during this unprecedented year in the midst of the COVID-19 pandemic. Their dedication, creativity and adaptability allowed them to continue to offer quality programming through in-person, outdoor, and/or virtual programming depending on the changing level of pandemic restrictions. Thank you for all that you have done and continue to do to support the children and families in our district!

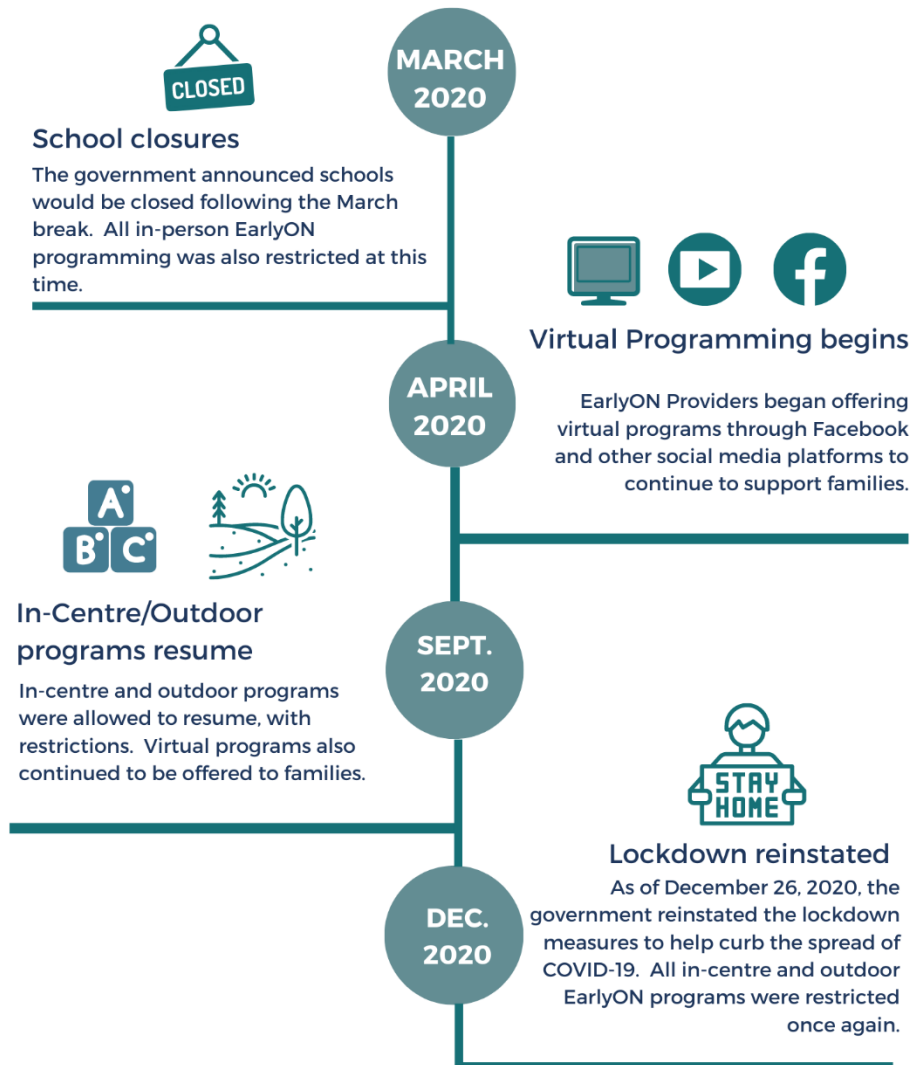
- Community Living North Bay
- Community Resource Centre Killaloe
- Family Enrichment
- North Bay Indigenous Hub
- Timiskaming Child Care
- West Nipissing Child Care Corporation



## INTRODUCTION

Although the past year has brought forward many challenges with the start of the COVID-19 pandemic in March 2020, the EarlyON Child & Family Centres in the District of Nipissing were able to quickly adapt and continue to provide services and support to our children and families, albeit in a slightly different way. The continuously changing climate of the pandemic led to various closures and restrictions for in-person services. The timeline below depicts how COVID-19 affected EarlyON Child & Family Centre services.

### Navigating the COVID-19 pandemic



## Scope & Data Collection

This report will focus on the variety of different programs and services that were available to children and families in the District of Nipissing between January 1 and December 31, 2020. As data collection methods varied slightly with the start of the pandemic, the data and information will be presented based on the time period and type of programs that were offered (i.e. in-centre, outdoor, or virtual programs).

In January 2020, a new data entry system was implemented to capture information related to EarlyON Child & Family Centre programs and services. The Event Registry and Attendance Manager (ERAM) is a web-based information and data system used by EarlyON Child & Family Centres in the District of Nipissing to collect attendance and registration information.

The data analysis was conducted using reports from ERAM, Excel spreadsheets, and Tableau Business Intelligence & Analytics Software.

## Limitations

The data collected using ERAM allows the tracking of unique individuals served (i.e. adults and children) as well as total visits made to an EarlyON Centre. When virtual programs began in April 2020, ERAM was not equipped to differentiate in-centre vs. virtual programming and as such, data for adults and children attending virtual programs was collected using an Excel spreadsheet. Unfortunately, this resulted in the inability to track unique adults and children served for the period of April to August 2020. In September, ERAM was adapted and EarlyON providers were able to use the system to track unique adults and children served for all program formats, whether virtual or in-person.

## DISTRICT OF NIPISSING EARLYON CHILD & FAMILY CENTRES

### EarlyON Child & Family Centres



**23**  
EarlyON Sites



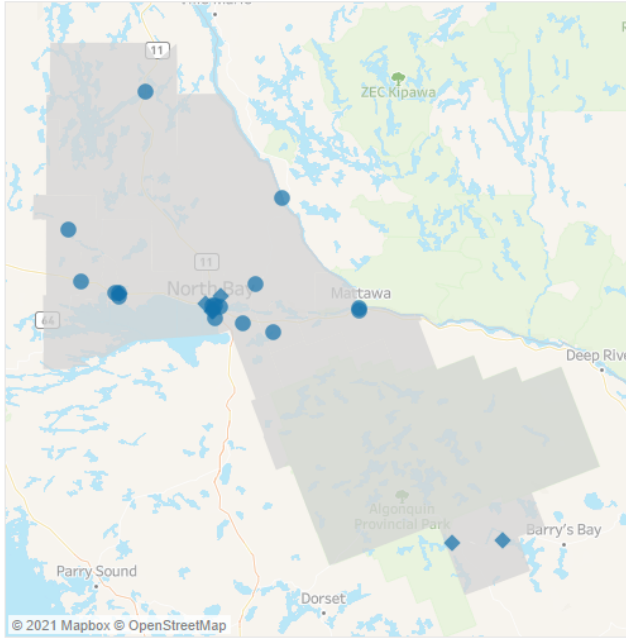
**15**  
Located in Schools



**12**  
French/Bilingual Sites\*



**5 / 3**  
Evening/Weekend Programs



EarlyON Sites - # of Days of Operation

Agency	Program Name	# Days of Operation
Community Living North Bay	EarlyON Chippewa*	6
	EarlyON Ferris Glen*	2
	EarlyON Lorrain*	2
	EarlyON Mariale*	1
	EarlyON MFRC	1
	EarlyON Odyssee*	2
	EarlyON OKP	3
	EarlyON Phelps	1
	EarlyON Sainte-Anne*	1
	EarlyON Saints-Anges*	2
	EarlyON Silver Birches	2
	EarlyON St. Victor	1
	Community Resource Centre Killaloe	EarlyON Madawaska
EarlyON Whitney		1
Family Enrichment	EarlyON EW Norman	3
	EarlyON Family Enrichment	5
North Bay Indigenous Hub	EarlyON Indigenous Hub	0
Timiskaming Child Care	EarlyON Temagami	1
West Nipissing Child Care Corporation	EarlyON Christ Roi*	2
	EarlyON Jeunesse Active*	2
	EarlyON Saint-Joseph*	1
	EarlyON Ste-Marguerite d'Youville*	4
	EarlyON West Nipissing Main Site*	3

The graphic above represents the EarlyON Child & Family Centres that were operating as of March 13, 2020 prior to the start of the COVID-19 pandemic. There were a total of **23** EarlyON locations across the district, **15** of which were located in schools. French and/or Bilingual programming was offered at **52%** of EarlyON Centres, as indicated with an asterisk in the table above.

Evening programs were offered monthly at EarlyON West Nipissing Main Site (Let's Build Together) and EarlyON Ste-Marguerite d'Youville (Electric Kitchen), bi-monthly at EarlyON EW Norman (Play, Dine & Dash), and weekly at EarlyON Temagami (Family Gym Night) and EarlyON Chippewa (variety of programs). Additionally, weekend programs were offered every second week at EarlyON West Nipissing Main Site (Breakfast Club) and EarlyON Ste-Marguerite d'Youville (Get Active), as well as weekly at EarlyON Chippewa (variety of programs).

Notes:

- EarlyON EW Norman increased their days of operation from 2 to 3 days in February 2020.
- EarlyON North Bay Indigenous Hub was scheduled to open in March 2020. Due to the pandemic, the program never opened to in-person programming, but began offering virtual services in June 2020.

## EARLYON CHILD & FAMILY CENTRES ATTENDANCE

### Unique Served vs. Total Visits

When adults (parents/caregivers) and children are registered in ERAM, they are provided with a unique identifier that allows us to track attendance information for adults and children, regardless of which site they attend within the District of Nipissing. The definitions below apply to both adults and children registered in the system.

**Served:** the unique number of adults or children that participated in an EarlyON program during the year indicated. Each adult or child is only counted once, regardless of the number of visits they have made throughout the year.

**Visits:** the total number of visits made by adults or children to an EarlyON program during the year indicated.

### Overall Attendance for 2020

The data presented for overall attendance includes attendance for in-person, outdoor and live virtual programs entered in ERAM for the periods of January 1 to March 13 and September 1 to December 31, 2020. It does not include the information from cross-jurisdictional virtual programs.

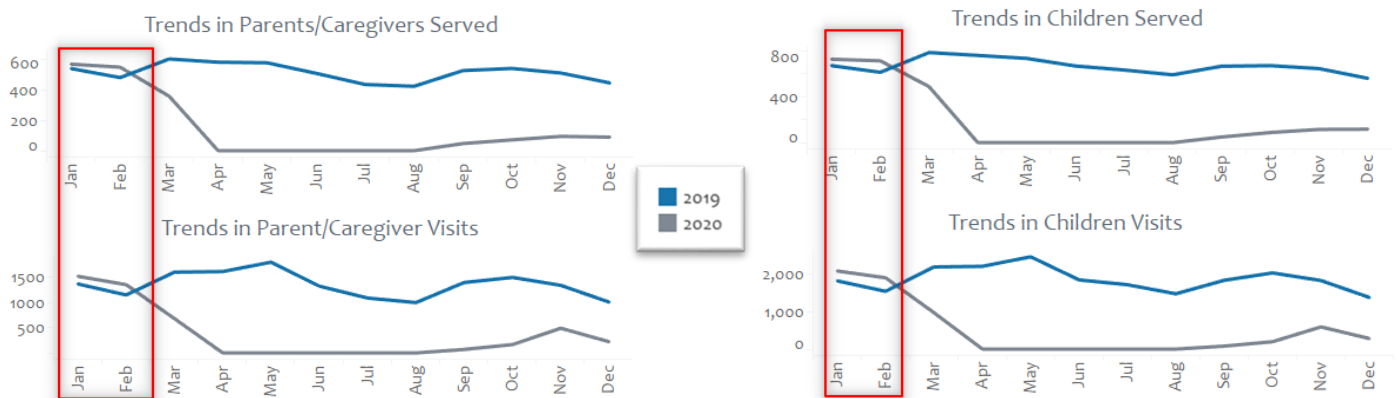


For those periods, there were **870** unique adults served for a total of **4,498** visits and **1,119** unique children served for a total of **6,125** visits made to EarlyON programs in the District of Nipissing.

Direct comparisons to overall attendance for previous years cannot be made due to the circumstances surrounding the pandemic. However, attendance trends for January and



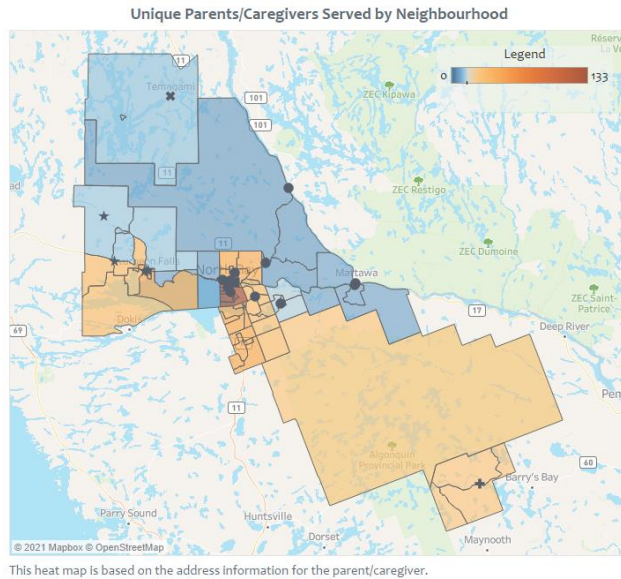
February 2020 did show a slight increase compared to the previous year as demonstrated in the graphs below.



The decrease observed in March is attributed to the COVID-19 related program closures occurring prior to the March break. Furthermore, no data was entered into ERAM between April-August 2020 during which time only virtual programs were allowed. Once in-person and outdoor programs were permitted again starting in September 2020, only 3 sites were offering in-centre programs (EarlyON West Nipissing Main Site, EarlyON Family Enrichment, and EarlyON E.W. Norman), and 2 sites offered Outdoor programs (EarlyON Chippewa and EarlyON West Nipissing Main Site).

### Adult Attendance by Neighbourhood

We have divided the District of Nipissing into various neighbourhoods by combining Statistics Canada Dissemination Areas (DA's). Using postal code information from the registration forms, we are able to determine the neighbourhoods in which adults live. However, there are some limitations to this process. For instance, some registration forms are missing postal code information, some postal codes can span multiple DA's, and some adults may have moved but may not have updated their registration information. Therefore, the neighbourhood information provided represents an approximation of where adults attending EarlyON Child & Family Centre programs live. This information helps us to ensure programs and services are available and accessible to all neighbourhoods in our District.



Neighbourhoods	Unique Served	Total Adult Visits
Airport Hill	19	85
Birchaven	47	292
Bonfield	14	98
Central/Downtown	133	650
East Ferris & Area	30	153
Field, River Valley & Area	13	93
Graniteville	66	312
Mattawa & Area	9	46
Nipissing North	8	48
Pinewood	81	355
Rural & CFB North Bay	41	231
South Algonquin & Area	25	64
Sturgeon Falls	46	307
Temagami & Area	12	36
Thibeault Terrace	34	201
Verner, Cache Bay & Area	30	205
West Ferris	131	820
West North Bay	9	37
Callander & Powassan	43	128
Marstay-Warren & St-Charles	2	23
No Postal Code Information	93	314
<b>Grand Total</b>	<b>870</b>	<b>4,498</b>

The neighbourhoods within the District of Nipissing with the most unique adults who attended an EarlyON program in 2020 were Central/Downtown (**133**), followed by West Ferris (**131**), Pinewood (**81**) and Graniteville (**66**). Similar to previous years, approximately **5%** of adults are visiting from neighbouring districts, including **43** adults from the Parry Sound District. Another point to consider is that almost **11%** of adults (**93**) did not provide postal code information and therefore cannot be mapped.

## PROGRAMS OFFERED AT EARLYON CENTRES

With the onset of the pandemic, EarlyON Child & Family Centre practitioners had to quickly adapt and learn to provide virtual programming in order to continue to support the children and families in our District. In order to highlight all the wonderful work that was done to support families, we will present data and information for the various types of program delivery methods that were provided over the course of 2020. Below is a description of each type of program that will be presented:

- **In-Centre Programs:** these programs were delivered in-person at EarlyON Child & Family Centres.
- **Outdoor Programs:** these programs were delivered by EarlyON Child & Family Centres in a variety of outdoor locations. All programming was conducted outdoors.
- **Registered Virtual Programs:** these programs required pre-registration and were not open to the public. They were delivered virtually either through live video conferencing platforms (e.g. Zoom, Blue Jeans, Webex, GoToMeeting, etc.) where adults and children

can interact with EarlyON practitioners in real time, or one-way interactions in which a practitioner was live or posted a video and parents could engage by commenting and sharing pictures of the activity. Some of these programs also included activity kits that were distributed to families.

- **Open Virtual Content:** this includes all open posts, videos, and other content posted to social media (i.e. Facebook, Instagram, YouTube, etc.) to support adults in engaging their children in a variety of early learning activities. Note: unique numbers served and visits are not applicable to this content; rather, number of views and engagement with posts was tracked using an Excel spreadsheet.

## January 1 to March 13, 2020

During this period, all EarlyON Child & Family Centres were operating as usual and both In-Centre and Outdoor Programs were available to children and families in our District.

### In-Centre Programs

During this period, the EarlyON Centres in the District of Nipissing served **1,052** unique children and **826** unique adults, for total of **4,953** and **3,530** visits, respectively. Table 1 lists the unique number of individuals served as well as the total numbers of visits for each of the programs offered during this time.



“ I loved attending the mom and baby class with my son. We were really isolated at home and getting out with other moms and babies was an essential resource to help my mental health. ”

Program Name	#Sessions	Unique Children	Total Children Visits	Unique Adults	Total Adult Visits
Baby and Me	6	16	27	13	22
Baby Yoga	4	12	26	12	26
Early Learning Program	60	864	3,695	657	2,553
Electric Kitchen	1	4	4	2	2
Family Enrichment	40	54	268	75	324
Get Active	4	32	48	24	32
Groupe de Jeu (Fr)	38	76	309	52	221
Gym Night	7	14	61	8	33
Let's Build Together	3	7	11	5	7
Let's get dirty	8	23	74	15	45
Little Cooks in the Kitchen	6	40	49	22	25
Little Einstein	10	29	87	24	66
Play N' Learn	9	17	45	11	28
Play, Dine and Dash	5	10	24	8	19
Play, Learn, Create	8	7	32	4	20
Pot-Pourri	7	24	56	17	37
The Baby Club	9	18	79	13	50
The Breakfast Club	5	29	58	19	30
<b>Grand Total</b>	<b>230</b>	<b>1,052</b>	<b>4,953</b>	<b>826</b>	<b>3,540</b>

\*Please note: the sum of unique served (for children and adults) may not add to the 'grand total' listed, as some individuals may have attended more than one program and will be counted in that row, but will only be counted once in the grand total.

## Outdoor Programs

Outdoor play and learning is increasingly recognized as being an important part of healthy development in early childhood, helping children learn to be more connected with nature and develop a better environmental awareness.

The EarlyON Centres in the District of Nipissing began offering dedicated Outdoor Programs in 2020. Unfortunately, in the early implementation of outdoor programming, some of the attendance for these sessions was tracked manually in ERAM, not allowing us the opportunity to present unique numbers of children and adults served. However, the number of sessions and total visits for January 1 to March 13, 2020 are listed here.



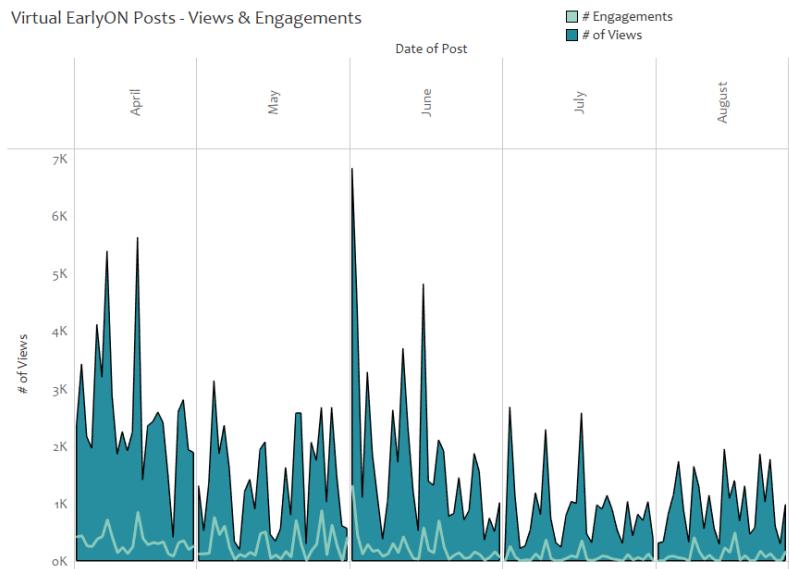
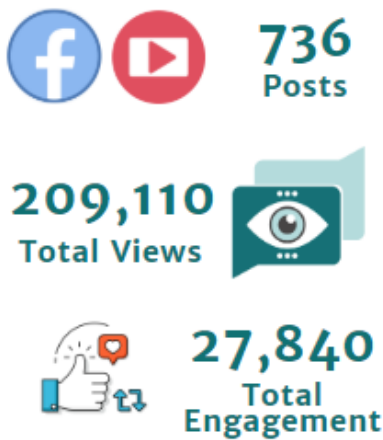
## April 1 – August 31, 2020

During this period, the COVID-19 pandemic restrictions resulted in the closure of all EarlyON Child & Family Centres to in-person programming (i.e. In-Centre and Outdoor Programs). Nevertheless, EarlyON practitioners adapted quickly and began to offer virtual programming and supports, including social media posts and videos, activity kits, and live virtual programming sessions via video-conferencing software. Although we are able to present total visits for adults

and children to registered live programs during this period, we are not able to present unique numbers, as attendance data for this period was not captured in ERAM.

### Open Virtual Content

As stated earlier, Open Virtual Content includes all social media posts and videos that were openly available to anyone to support adults in engaging their children in a variety of early learning activities. Please note that this data includes information from cross-jurisdictional programs (Timiskaming Child Care & Community Resource Centre Killaloe).



Examples of some of the open online content shared with families include Discoveries in Nature, Story Time, Sing-Along, Scavenger Hunt, Science Wonders, Language Class: Ojibway Verbs, and so much more.

### Registered Virtual Programs

During this period, EarlyON Centres also provided virtual programming for which pre-registration was required. Some of these programs included activity kits, while other activity kits were provided that were not part of a specific program. The information provided here includes cross-jurisdictional programs, as well as other families who participated in virtual programming from outside of the district.



The data presented here includes the total number of visits by children and adults to registered virtual programs, as unique numbers were not available in ERAM during this period.

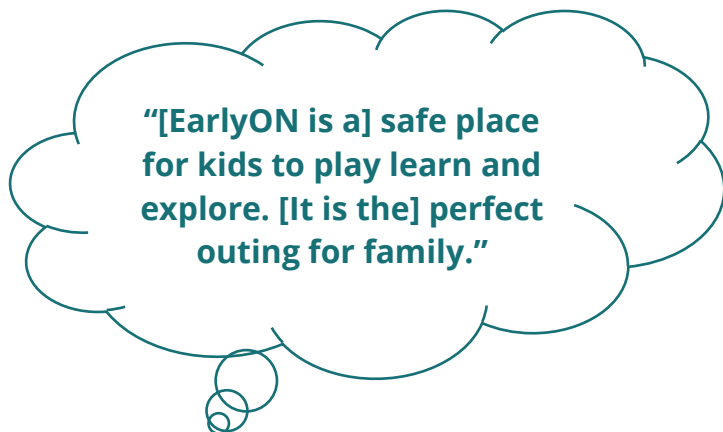
A variety of programs were offered, including Mom’s Night In, Zoom-Along with EarlyON Toy Bus, Breastfeeding Circle, Prenatal Class, Show & Share, Say & Sign, and many more

### September 1 – December 31, 2020

During this period, Outdoor and In-Centre Programs were able to resume up to December 26, at which time the lockdown was reinstated. Virtual programs continued to be offered during this period as well, and all registered virtual programs were tracked in ERAM, allowing us to present unique numbers of children and adults served.

#### In-Centre Programs

Due to restrictions imposed by the COVID pandemic, only a few EarlyON sites were open to in-centre programs during this period. However, families continued to attend and enjoy this program option. Table 2 displays the attendance for in-centre programs that were offered during this time.

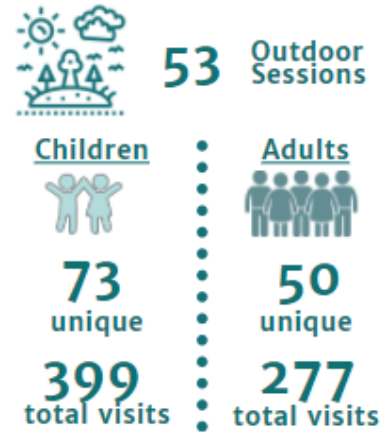


Program	#Sessions	Unique Children	Total Children Visits	Unique Adults Served	Total Adult Visits
Early Learning Program	15	13	64	10	48
Family Enrichment	36	28	134	35	191
Groupe de Jeu (Fr)	7	18	27	9	18
<b>Grand Total</b>	<b>58</b>	<b>56</b>	<b>225</b>	<b>51</b>	<b>257</b>

\*Please note: the sum of unique served (for children and adults) may not add to the 'grand total' listed, as some individuals may have attended more than one program and will be counted in that row, but will only be counted once in the grand total.

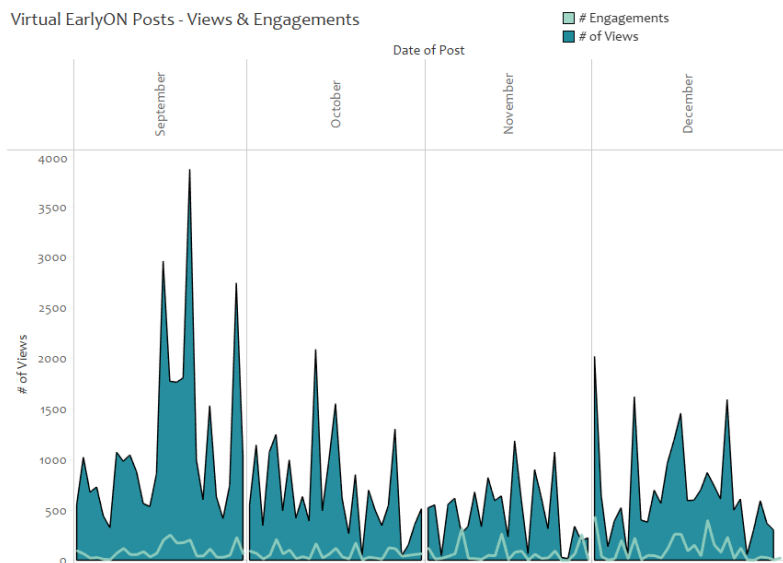
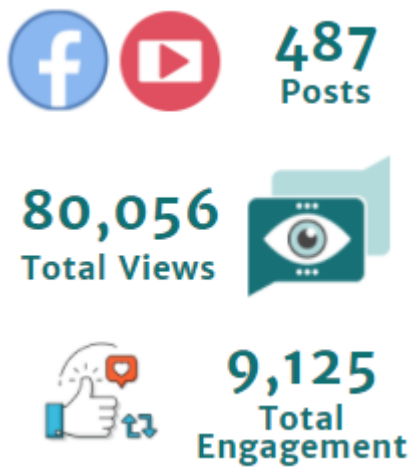
### Outdoor Programs

During this period, Outdoor Programs were offered in a variety of locations throughout North Bay and West Nipissing. Examples of Outdoor Programs included STEAM in the Park, Babies in the Park, Trail Babies, Discoveries in Nature, Geocaching, etc.



### Open Virtual Content

The quantity of open virtual content decreased slightly during this period as EarlyON Centres received feedback on the types of content that children and families wanted to see. Nonetheless, families in our district (and within our cross-jurisdictional programs) continued to enjoy and engage with the open virtual content that was available to them.



## Registered Virtual Programs

During this period, ERAM was used to capture attendance for virtual programs and therefore the numbers served and total visits do not include data from cross-jurisdictional programs. However, the number of activity kits provided during this period does include cross-jurisdictional programs.

Table 3 below provides the attendance details for registered virtual programming provided during this time.

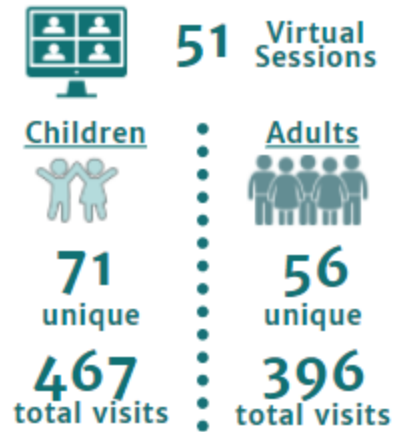


Table 3. Unique Served & Total Visits for Registered Virtual Programs from September 1-December 31, 2020

Program Name	# Sessions	Unique Children	Total Children Visits	Unique Adults	Total Adult Visits
Book Club	8	15	40	10	31
Childbirth Education	2	0	0	6	3
Early Learning Program	6	10	26	14	47
Family Literacy	2	7	12	7	12
Family Mindfulness	6	7	39	4	27
Five Senses	4	5	15	4	11
Moms Life	2	4	8	2	4
Sensational Senses	5	8	18	7	20
Special Activity	12	56	286	40	227
Virtual Emotions	2	7	9	5	8
Zumba Kids	2	12	14	5	6
<b>Grand Total</b>	<b>51</b>	<b>71</b>	<b>467</b>	<b>56</b>	<b>396</b>

\*Please note: the sum of unique served (for children and adults) may not add to the 'grand total' listed, as some individuals may have attended more than one program and will be counted in that row, but will only be counted once in the grand total.

## EARLYON OUTREACH AND MOBILE SERVICES

Prior to the pandemic, plans were underway to offer EarlyON Outreach and Mobile Services targeted at underserved areas throughout the District of Nipissing. Ultimately, DNSSAB wants to ensure that all children and their families have access to the supports and resources that they require at no additional fee, no matter where they live in our District.

The EarlyON Outreach and Mobile Services vehicle has been equipped and is ready to serve the families in our district when the pandemic restrictions allow.

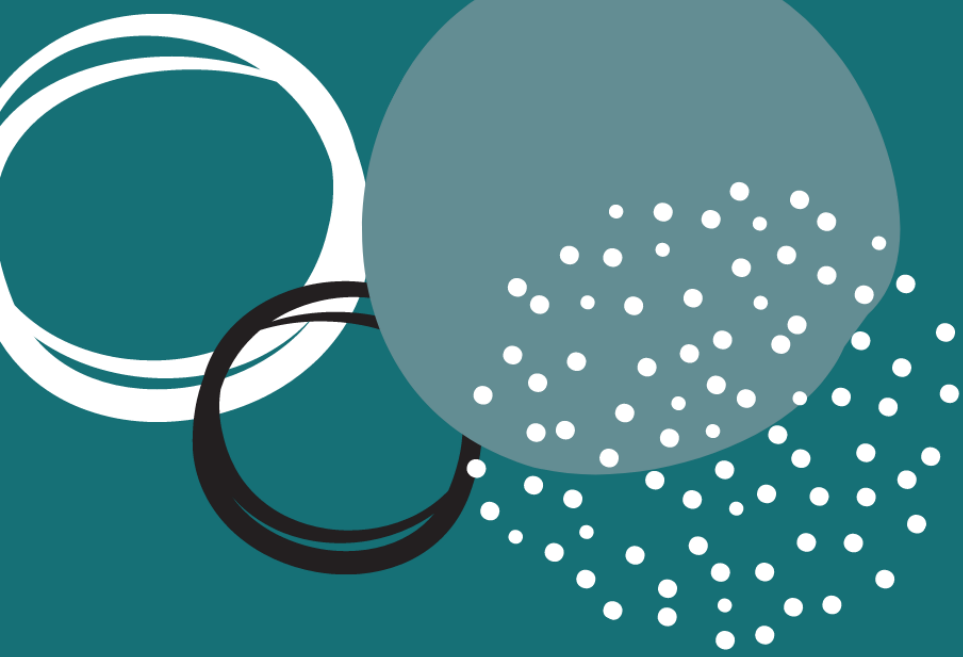




## SUMMARY

Although 2020 proved to be a challenging year, the EarlyON Child & Family Centres in the District of Nipissing were able to bring some light and joy into the lives of families in our area by providing fun and engaging virtual and outdoor programming and offering continued support. Feedback received on the virtual programming has been very positive, and as such, some virtual programming will likely continue to be offered even when COVID-related restrictions ease.

“I’m thankful to live in a community like North Bay, that when their EarlyON programs had to pivot they kept their programming and kits available to all.”



District of Nipissing  
Children's Services  
200 McIntyre St E, North Bay, ON PIB 8J8

Phone: 705-474-2151  
Fax: 705-474-0136  
Toll Free: 1-877-829-5121  
ChildrensServices@dnssab.ca

[dnssab.ca/childrens-services](https://dnssab.ca/childrens-services)